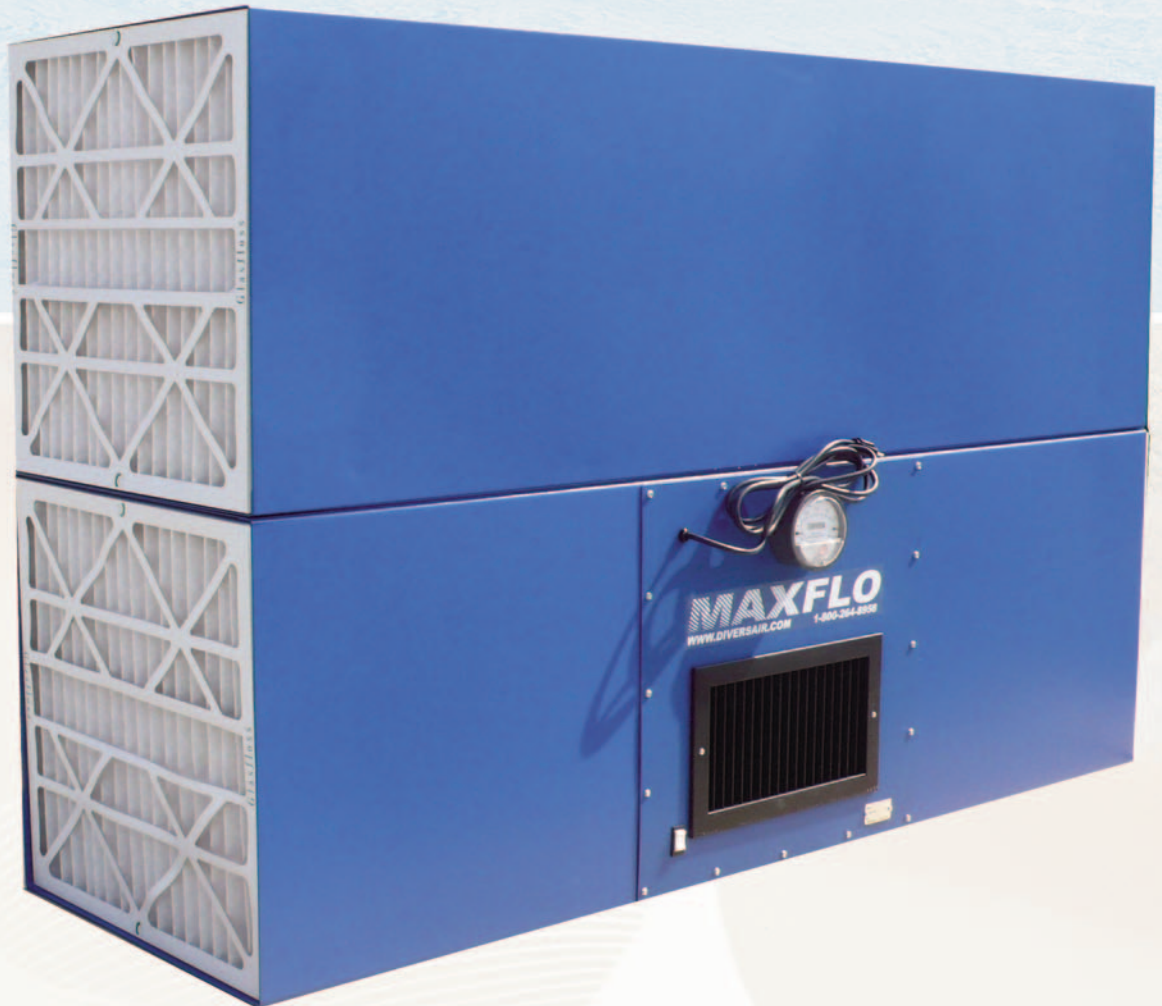


DIVERSIFIED AIR SYSTEMS, INC.

# **MAXFLO D-40**<sup>TM</sup> *series*

## *Industrial Air Cleaners*

- *Economical way to improve air quality 65% to 85%*
- *Helps meet or exceed OSHA standards*
- *Recirculates clean air, eliminating the need for expensive make-up air*



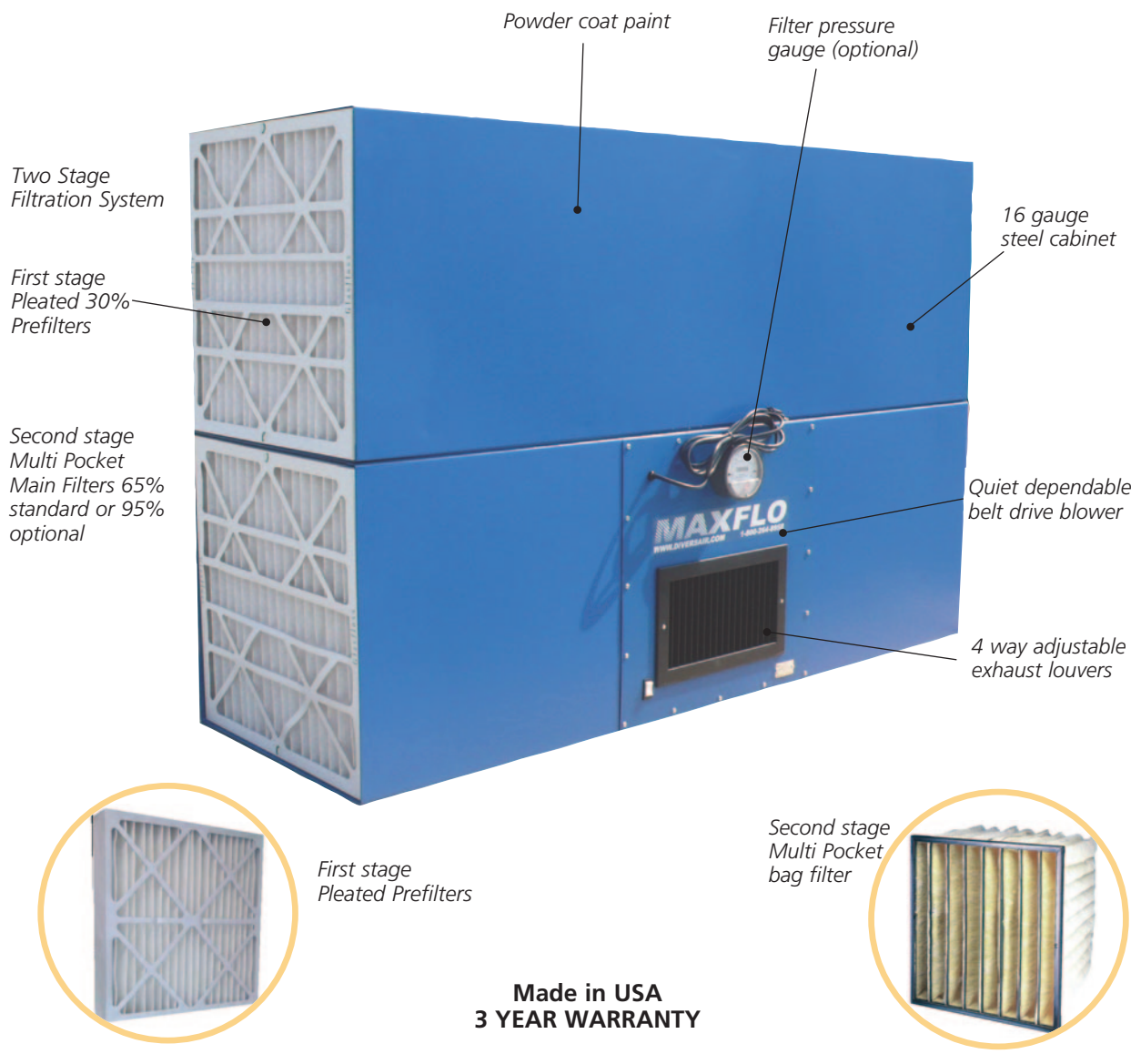
- *Reduces housekeeping costs and improves productivity*
- *Minimal installation required, ceiling or side wall mounted*
- *Ships fully assembled, 4000 to 4500 CFM*

*Superior technology generating substantial operating savings*

## TYPICAL APPLICATIONS FOR THE MAXFLO AMBIENT AIR CLEANERS

- Welding Smoke • Grinding Dust • Sanding Dust • Oil Smoke • Coolant Mist • Powders • Odors, etc...

## OUTSTANDING MAXFLO D SERIES FEATURES

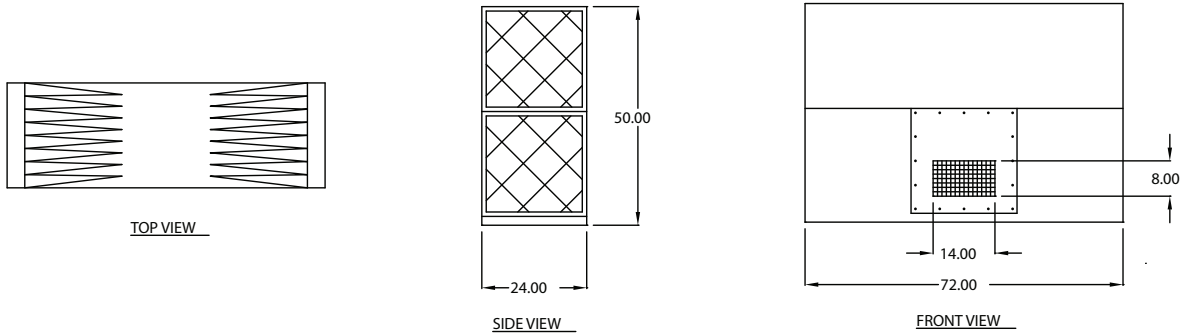


Ideal for automotive industry, welding shops, vocational schools, training facilities, laboratories, wood working shops, metal transforming industries, batching and powder processes.

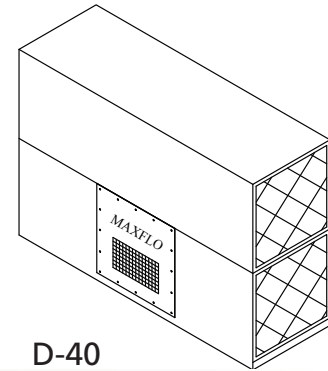
Call today: 800-264-8958

## MAXFLO D-40 SERIES SPECIFICATIONS

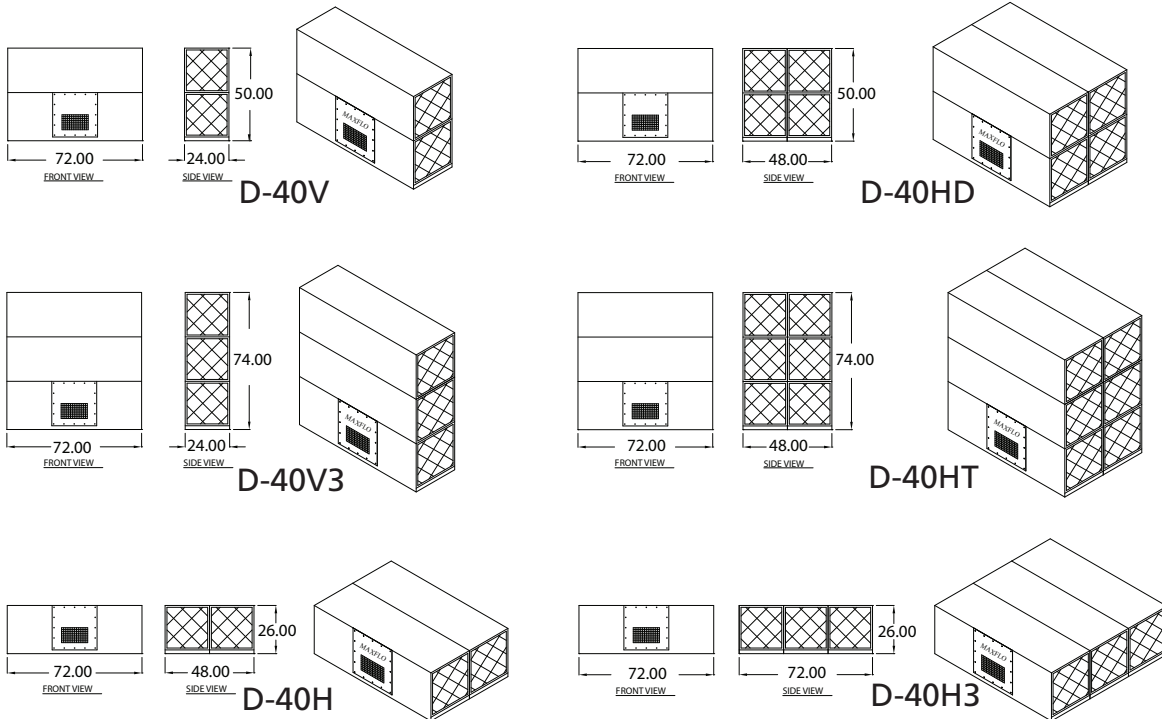
16 GAUGE STEEL CABINET FINISHED WITH A DARK BLUE CHEMICAL RESISTANT POLYURETHANE PAINT, FOUR WAY INDIVIDUALLY ADJUSTABLE BLADES, AND A SINGLE SPEED, BELT DRIVEN MOTOR WIRED TO JUNCTION BOX ON UNIT.



SPECIFICATIONS			
AIRFLOW:	D-40	4000 CFM	PREFILTERS: (Depends on config.)
	D-45	4500 CFM	(4) 4" Pleated Std. (4) Aluminum Mesh, Opt.
ELECTRICAL:	D-40	2 HP 208-230/460/3, 6.0-5.8/2.9 Amps	MAIN FILTERS: (Depends on config.)
	D-45	3 HP 230/460/3, 8.6/4.3 Amps	
WARRANTY:	3 Years on all parts except filters		NOISE: 74 dBA
OPTIONS:	Filter replacement gauge, Mounting bracket, Silencer, Wrap-a-round prefilter, Washable pre-filter (Contact Diversified Air for more options)		



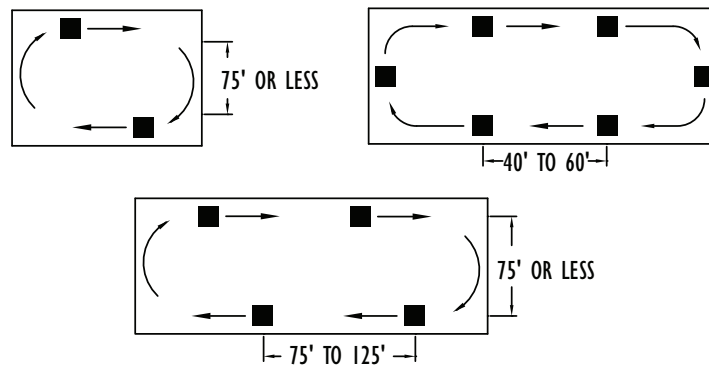
## MAXFLO D-40 SERIES OPTIONAL MULTIPLE CABINET CONFIGURATION



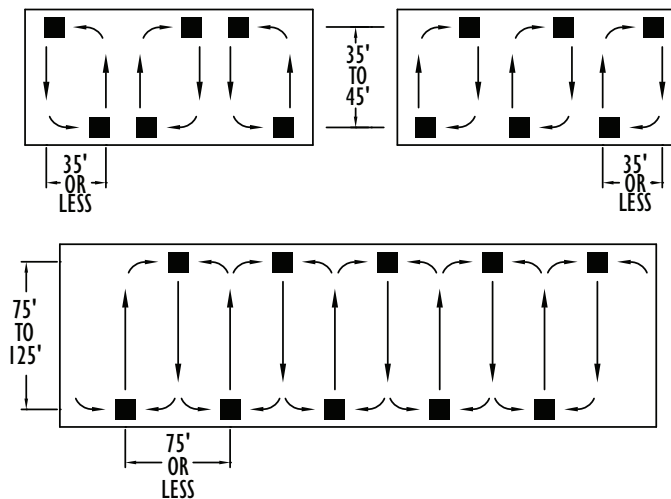
## FREE HANGING UNDUCTED AIR CLEANING SYSTEMS

Unducted air cleaning systems consist of one or more interior air cleaners positioned in the overhead plant space to create a planned air circulation airflow pattern. This method effectively cleans the overall ambient air. Unducted systems rely on constant cleaning and mixing of the entire area volume to remove contaminants. Unducted systems never remove 100% of the contaminants. The objective of this method is to achieve a substantial contaminant reduction at steady-state levels. Unducted systems will typically provide an estimated 65 to 85% contaminant reduction. The percentage reduction is based on the number of air changes provided by the unducted air cleaning system.

### Recommended Air Flow Patterns



### CIRCULAR AIR PATTERNS



### CROSS-BAY PATTERNS