

# **MAXDRIVE<sup>MT</sup>**

*Extractor fan*



- *Direct drive*
- *Backward inclined*
- *Spark proof*

*Superior technology generating substantial operating savings*

# MAXDRIVE<sup>MT</sup>

*High-Productivity Innovative Products*

## **MAXDRIVE** *Direct drive extractor fan*

Manufactured with backward inclined aluminium blades, MAXDRIVE fans are designed to extract smoke, vapor and light dust away from the worker's breathing zone. The rugged steel housing with aluminum impeller assures a non-sparking design. MAXDRIVE can be mounted directly with MAXFLO fume arms, MAXBOOM extension booms or hose reels.

## *Industrial Air Specialists*

With our headquarters in Louisville, Kentucky, Diversified Air Systems, Inc. has been providing quality air solutions to industrial and commercial facilities since 1981. During our more than twenty-nine years of operation, Diversified Air Systems, Inc. has established two important company traditions: offering state-of-the-art equipment at competitive prices and achieving long-term customer satisfaction.

The staff of Diversified Air Systems, Inc. includes five application engineers, with a combined experience of more than 75 years in the air filtration and HVAC industry. Whether your facility requires an air filtration system for dust, mist, or fumes, or an HVAC solution to meet ventilation needs, Diversified Air Systems, Inc. has the equipment and expertise to meet the need.

Services include air quality analysis, system design, equipment sales, turnkey installation, onsite servicing, and supply of replacement filters and accessories.



### **Other Filtration Systems available:**

Air Cleaners

Containment Booths

Decontamination Booths

Downdraft Tables

Dust Collectors

Fans and Blowers

Gas & Odor Control

High Vacuum Systems

Mist Collectors

Paint Booths

Stainless Steel Collectors

Vehicle Exhaust Systems

Wet Dust Collectors

## MAXDRIVE<sup>MT</sup> THE RIGHT FAN FOR SOURCE EXTRACTION

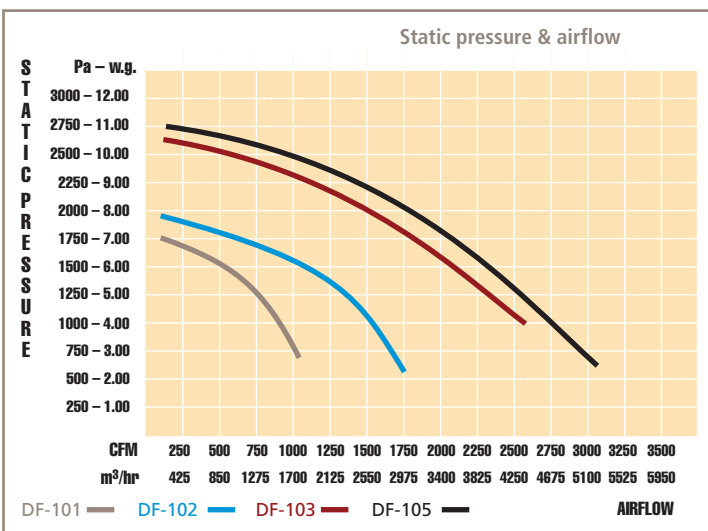
Powerfull, rugged and maintenance free

Most of our competitors do not include these standard features:

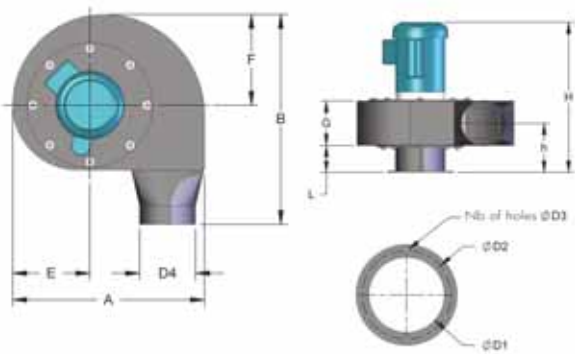
- Multi purpose for source capture
- 3450 R.P.M. direct drive design with T.E.F.C motors
- Aluminum backward inclined impeller with steel housing for spark-proof design
- Adjustable orientation air discharge
- Powder coat painted housing
- Duct flange connection included
- Inlet cone for maximum suction
- Inlet wide mesh protective screen



## TYPICAL APPLICATIONS FOR MAXDRIVE EXTRACTOR FAN



## MAXDRIVE FANS (3450 R.P.M.)



Optional outlet silencer (reduces DB level by 10 to 25 % depending on model)

Contact factory or representative for details and specifications

CHART 1

Amperage draw					
Model	Voltage	Amperage	Model	Voltage	Amperage
DF-101	115-1-60	12	DF-103	115-1-60	N/A
	230-1-60	6.5		230-1-60	17
	208-3-60	3.1		208-3-60	9.6
	460-3-60	1.6		460-3-60	4.8
	575-3-60	1.4		575-3-60	3.9
DF-102	115-1-60	24	DF-105	115-1-60	N/A
	230-1-60	12		230-1-60	28
	208-3-60	6.8		208-3-60	15.2
	460-3-60	3.4		460-3-60	7.6
	575-3-60	2.7		575-3-60	6.1

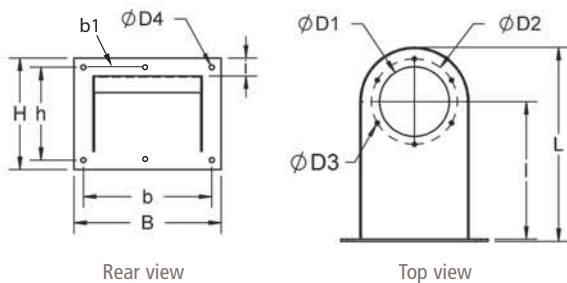
### Fan dimensions

Model	Power [HP] / [Kw]	Dimensions [inches] / [mm]												Weight [lbs] / [kg]
		A	B	E	F	H	L	G	h	d1	d2	d3	d4	
DF-101	1 / 0.75	20.2 / 513	22.6 / 574	8.3 / 211	9.8 / 249	21.1 / 536	3.9 / 99	5.9 / 150	6.9 / 175	6.25 / 160	7.69 / 195	0.4 / 9	6 / 198	6 / 70 / 31.8
DF-102	2 / 1.50	22.7 / 577	24.8 / 630	9.2 / 234	11 / 279	24.8 / 630	4.9 / 124	6.3 / 160	7.4 / 188	8 / 200	9.69 / 246	0.4 / 9	8 / 249	8 / 82 / 37.3
DF-103	3 / 2.25	25.6 / 650	27.3 / 693	10.4 / 264	12.5 / 318	25.4 / 645	4.9 / 124	6.9 / 175	8.4 / 213	10 / 254	11.38 / 289	0.4 / 9	10 / 302	8 / 96 / 43.6
DF-104	5 / 3.55	25.6 / 650	27.3 / 693	10.4 / 264	12.5 / 318	27.3 / 693	4.9 / 124	7.8 / 198	8.8 / 224	12 / 305	13.5 / 343	0.4 / 9	12 / 302	8 / 166 / 75.5

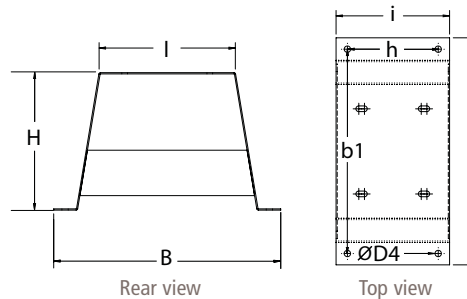
CHART 2

## MAXDRIVE FAN SUPPORT BRACKET DIMENSIONS

### Wall mount bracket



### Roof top / horizontal mount bracket (3 & 5 H.P. only)



### Bracket dimensions

CHART 3

Model	Power [HP] / [Kw]	Dimensions [inches] / [mm]													Weight [lbs] / [kg]
		D1	D2	Nb	D3	D4	L	I	H	h	B	b	b1	i	
WBF-1006	1 / 0.75	6.25 / 160	7.69 / 195	6	0.28 / 7	0.43 / 11	17.44 / 443	12.38 / 314	10 / 254	8.31 / 211	13.19 / 335	11.5 / 292	5.75 / 144	N/A	11 / 5
WBF-1008	2 / 1.50	8 / 200	9.69 / 246	8	0.35 / 9	0.43 / 11	22.44 / 570	15.25 / 387	11.88 / 297	9.75 / 248	15.5 / 394	13.63 / 346	6.75 / 170	N/A	13 / 5.9
WBF-1010	3 / 2.25	10 / 254	11.38 / 289	8	0.35 / 9	0.43 / 11	22.44 / 570	15.25 / 387	11.88 / 297	9.75 / 248	15.5 / 394	13.63 / 346	6.75 / 170	N/A	15 / 6.8
WBF-1012	5 / 3.55	12 / 305	13.5 / 343	8	0.35 / 9	0.43 / 11	26.31 / 668	18.38 / 467	11.88 / 297	9.75 / 248	18.13 / 460	16.13 / 410	8.00 / 200	N/A	21 / 9.5
WBF-103-SUPP	3 / 2.25	N/A	N/A	4	N/A	0.56 / 14	16 / 400	7.77 / 194	10.10 / 252	6.50 / 162	8.00 / 200	N/A	14.00 / 350	8.00 / 200	12 / 5.4
WBF-105-SUPP	5 / 3.55	N/A	N/A	4	N/A	0.56 / 14	20 / 500	11.77 / 294	12.10 / 302	8.00 / 200	10.00 / 250	N/A	18.00 / 450	10.00 / 250	16 / 7.2

## CREATE YOUR MAXDRIVE EXHAUST FAN SPECIFICATION

- Fan to have air volume and static pressure capacity as per manufacturer's fan performance curves
- 11 and 14 gauge powder coat painted steel housing.
- Bolted flanged inlet
- Fan to include wide mesh protective screen at inlet
- FAN MODEL TO BE**
  - DF-101 (1 H.P.) ☐
  - DF-102 (2 H.P.) ☐
  - DF-103 (3 H.P.) ☐
  - DF-105 (5 H.P.) ☐
- Voltage to be: 115/1 / 60 ☐ 208/3 / 60 ☐  
230/1 / 60 ☐ 460/3 / 60 ☐ 575/3 / 60 ☐
- Aluminum impeller to be of grade 5052 and backward inclined. ☐
  - Powder coat painted steel impeller for temperatures above 400 °F [205 °C] ☐
- FAN TO BE INCLUDED WITH SUPPORT BRACKET MODEL**
  - WBF-1006 (1 H.P.) ☐
  - WBF-1008 (2 H.P.) ☐
  - WBF-1010 (3 H.P.) ☐
  - WBF-1012 (5 H.P.) ☐
  - WBF-103-SUPP (3 H.P.) ☐
  - WBF-105-SUPP (5 H.P.) ☐
- Motor cover for exterior installation ☐
- Outlet silencer ☐

### Diversified Air Systems, Inc.

10801 Electron Drive, Louisville, Kentucky 40299

Toll free: **(800) 264-8958**

Tel.: **(502) 267-0333** • Fax: **(502) 267-4241**

Website: [www.diversair.com](http://www.diversair.com) • email: [info@diversair.com](mailto:info@diversair.com)