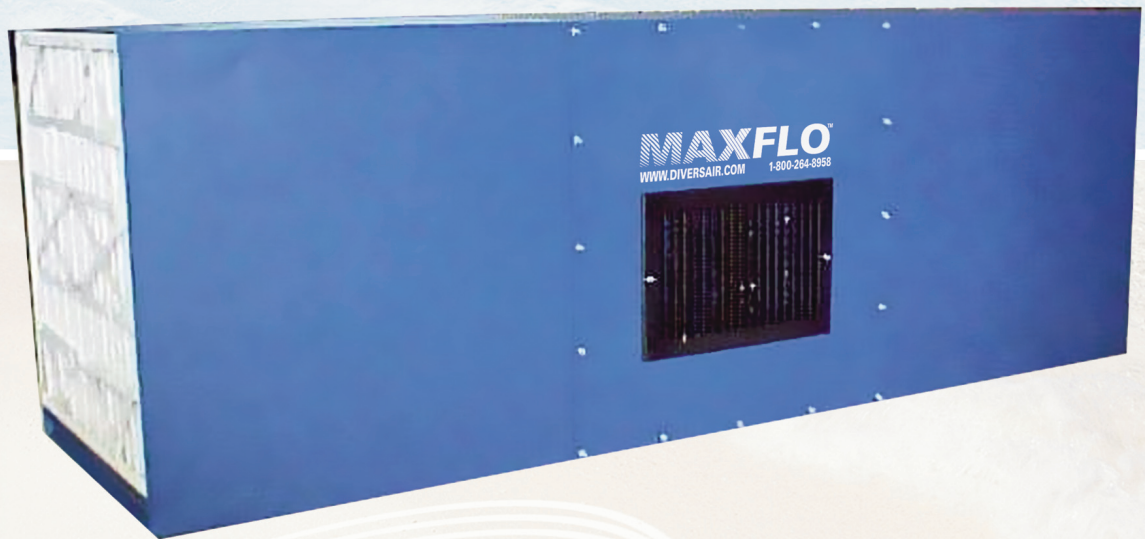


DIVERSIFIED AIR SYSTEMS, INC.

MAXFLO D-30™ series

Industrial Air Cleaners

- *Economical way to improve air quality 65% to 85%*
- *Helps meet or exceed OSHA standards*
- *Recirculates clean air, eliminating the need for expensive make-up air*



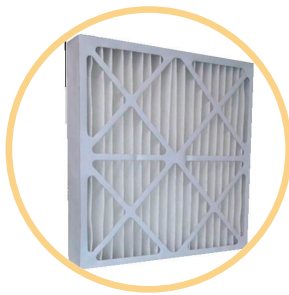
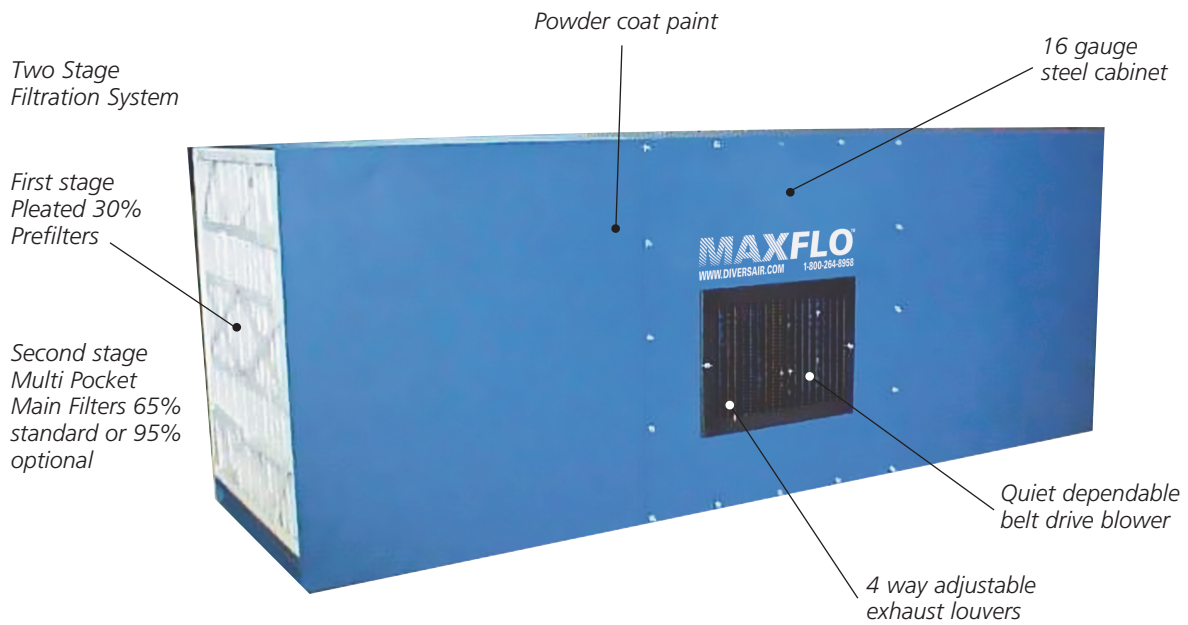
- *Reduces house keeping costs and improves productivity*
- *Minimal installation required, ceiling or side wall mounted*
- *Ships fully assembled 3000 to 3500 CFM*

Superior technology generating substantial operating savings

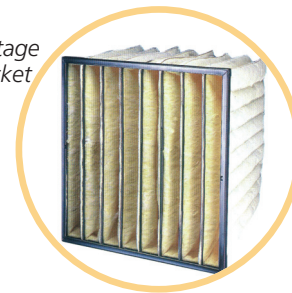
TYPICAL APPLICATIONS FOR THE MAXFLO AMBIENT AIR CLEANERS

- Welding Smoke • Grinding Dust • Sanding Dust • Oil Smoke • Coolant Mist • Powders • Odors, etc...

OUTSTANDING MAXFLO D SERIES FEATURES



First stage Pleated Prefilters



Second stage Multi Pocket bag filter

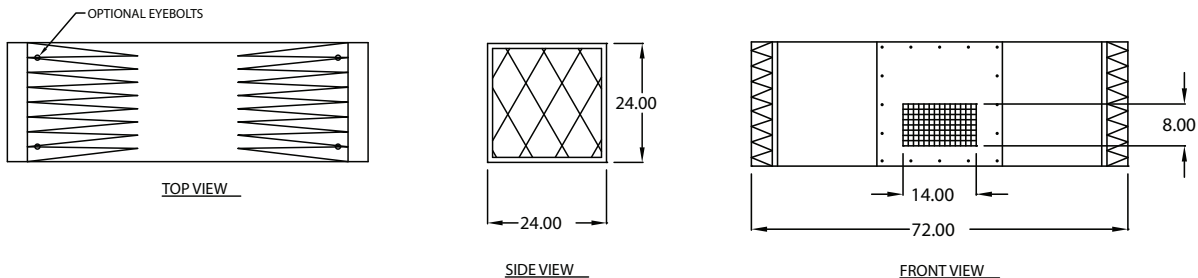
Made in USA
3 YEAR WARRANTY

Ideal for automotive industry, welding shops, vocational schools, training facilities, laboratories, wood working shops, metal transforming industries, batching and powder processes.

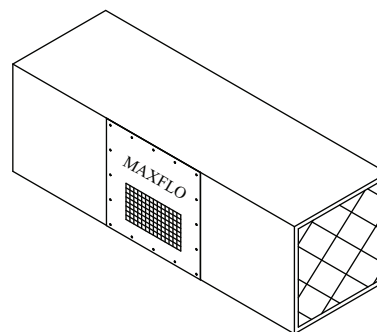
Call today: 800-264-8958

MAXFLO D-30 SERIES SPECIFICATIONS

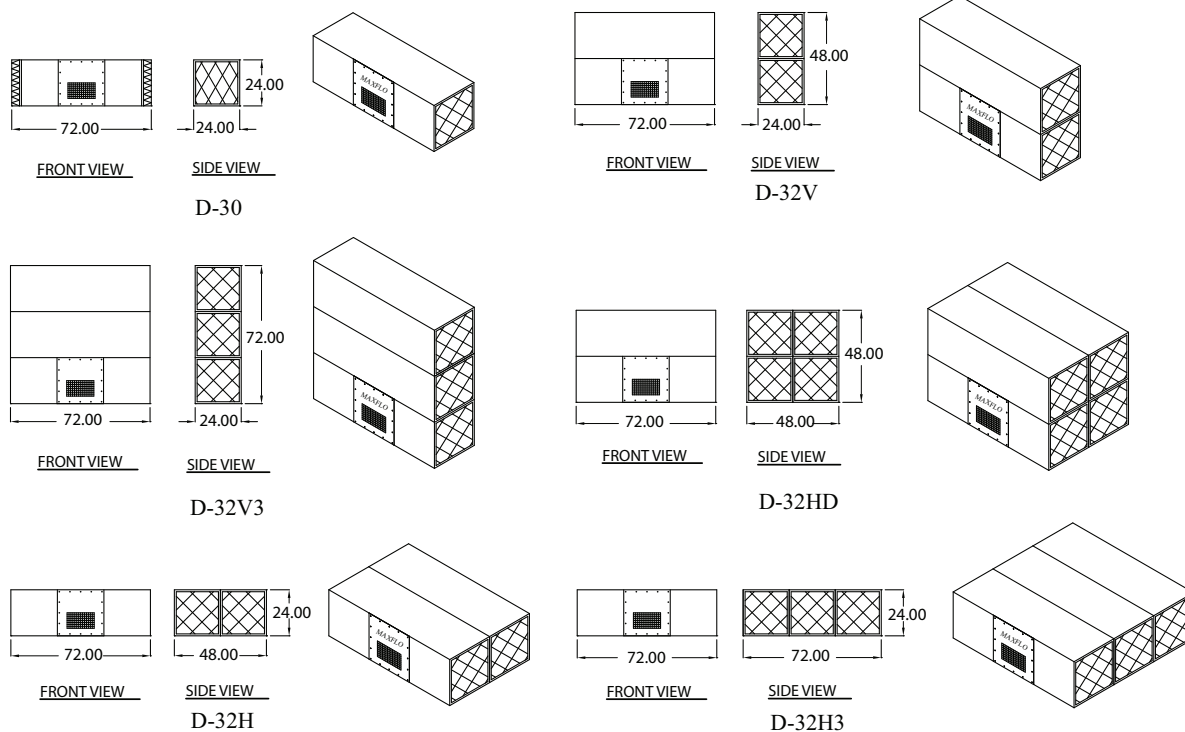
16 GAUGE STEEL CABINET FINISHED WITH A DARK BLUE CHEMICAL RESISTANT POLYURETHANE PAINT, DIRECT DRIVE, TWO-SPEED MOTOR WITH 12', 16 GAUGE POWER CORD AND FOUR WAY INDIVIDUALLY ADJUSTABLE BLADES.



SPECIFICATIONS				
AIRFLOW:	3000 CFM (High)	PREFILTERS: (Depends on config.)	(4) 4" Pleated Std.	
	1600 CFM (Low)		(4) Aluminum Mesh, Opt.	
ELECTRICAL:	3/4 HP 115V, 8.5 Amps, 950 Watts, Std.	MAIN FILTERS: (Depends on config.)	(4) 22" 8 pocket 65%, Std.	
	3/4 HP 208-230V, Opt.		(4) 22" 8 pocket 95%, Opt.	
WEIGHT	175 lbs	AFTER FILTERS	(2) 2" charcoal, Opt.	
WARRANTY:	3 Years on all parts except filters		NOISE:	62 dBA
OPTIONS:	2 HP motor (3500 CFM) Filter replacement gauge, Mounting bracket, Silencer.			



MAXFLO D-30 SERIES OPTIONAL MULTIPLE CABINET CONFIGURATION

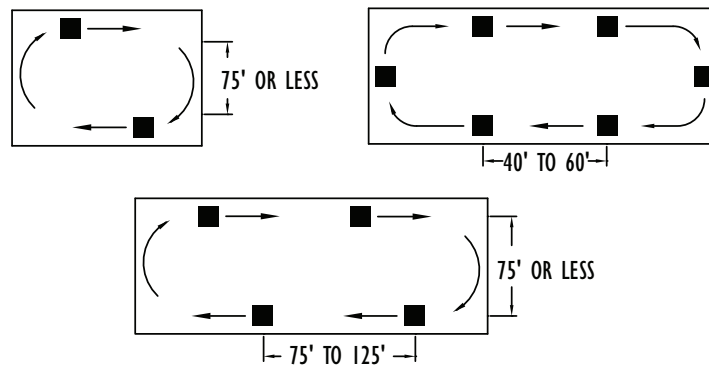


Call today: 800-264-8958

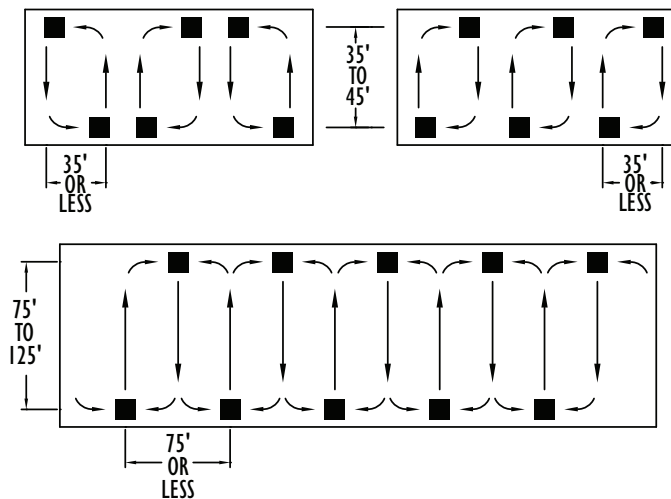
FREE HANGING UNDUCTED AIR CLEANING SYSTEMS

Unducted air cleaning systems consist of one or more interior air cleaners positioned in the overhead plant space to create a planned air circulation airflow pattern. This method effectively cleans the overall ambient air. Unducted systems rely on constant cleaning and mixing of the entire area volume to remove contaminants. Unducted systems never remove 100% of the contaminants. The objective of this method is to achieve a substantial contaminant reduction at steady-state levels. Unducted systems will typically provide an estimated 65 to 85% contaminant reduction. The percentage reduction is based on the number of air changes provided by the unducted air cleaning system.

Recommended Air Flow Patterns



CIRCULAR AIR PATTERNS



CROSS-BAY PATTERNS